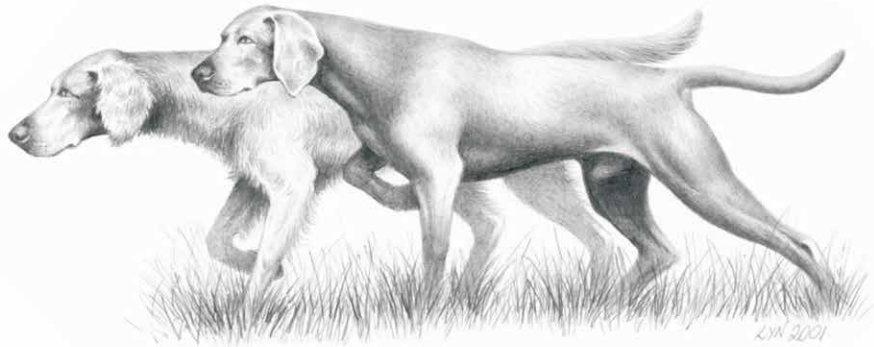


7th AUSTRALIAN WEIMARANER NATIONAL



SOUTH AUSTRALIA 2023

# CHAMPIONSHIP SHOW CRITIQUES

Breed Judge: Małgorzata Wąsacz-Rosa

Saturday 6th May & Sunday 7th May

# OUR JUDGE CHAMPIONSHIP SHOW

**MAŁGORZATA WAŚACZ-ROSA**



I come from a family in which dogs have always been present. They were there when I was a child and when my children were growing up, they have always been members of my life. Since 2002 I have been the owner of a Weimaraner kennel by the name of Canis Fortuna FCI. At the beginning we only had Weimaraners, but then we started breeding Magyar Vizslas and German Wirehaired Pointers as well.

Our kennel is proud of its many champions and international champions, which come from over 40 litters that we have bred over the years. For a few years I worked as a judge's assistant, and since 2012 I am a group VII judge myself. From the very beginning of my journey with dogs I have been working actively in the branch of the Polish Kennel Club in Opole. I have been for many years the treasurer, currently I am the deputy vice president for breeding of the branch. Together with my friends from the Club we organize annually an international dog show which counts with participation of over 4000 dogs from Poland and Europe.

**"Thanks to the opportunity of judging at Australian Weimaraner National.**

**I had the possibility to familiarize myself with breeding tendencies here in Australia and compare them with the European ones.**

**I've met here many extraordinary exemplars of my favourite breed. Dogs which represent both power and harmony, with amazing proportions and harmonious movement.**

**I wish to congratulate all the breeders for accomplishing so much and I think that your dogs are the best proof of that. For more than 20 years weimaraners have been my great love. Not only because of their beauty and noble looks, but also their stable character. I think we can all agree that weimaraner is the greatest dog breed!**

**I wish to thank the Weimaraner Club of South Australia and Show Committee for the flawless organization of the show.**

**Last but not least, I want to thank my ring steward for helping me throughout the show, and the breeders for creating an atmosphere of mutual respect at the ring.**

**It was an unforgettable experience."**

- Words from Malgorzata

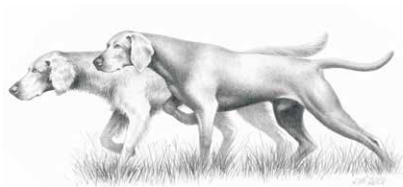


## GENERAL SPECIALS

BEST EXHIBIT IN SHOW	83
RUNNER UP BEST IN SHOW	39
BEST BABY PUPPY IN SHOW	77
BEST MINOR PUPPY IN SHOW	23
BEST PUPPY IN SHOW	26
BEST JUNIOR IN SHOW	34
BEST INTERMEDIATE IN SHOW	39
BEST AUSTRALIAN BRED IN SHOW	83
BEST OPEN IN SHOW	58
BEST VETERAN IN SHOW	12
BEST NEUTER IN SHOW	119
WINNER: SIRE & PROGENY	109
WINNER: DAM & PROGENY	48
WINNER: BREEDER'S TEAM	123

BREEDER OF BEST EXHIBIT IN SHOW

**WALDWIESE KENNELS**



## CRITIQUES - LONGHAIR BITCH

Please note critiques have been typed word for word from tape recording with the following word replacements:

MASS with WEIGHT, AMBLE with PACE, ANGULATION OF BACK with HIND ANGULATION or ANGULATION OF HIND

### WEIMARANER (LONGHAIR) CLASS 1A BABY PUPPY BITCH 1 ENTRY

---

<b>1</b>	<b>FELDJAEGER PASSION FOR THIS MISS</b>	<b>GRADE</b>
1	Nice puppy with good proportions of body. Very nice head and good neck. Good top line and bottom line. Long deep chest. Elbows loose during movement. During movement hocks too narrow. Good balanced angulation front and back,	Very Promising

### WEIMARANER (LONGHAIR) CLASS 4A JUNIOR BITCH

---

<b>2</b>	<b>AUST CH BROMHUND EXOTIC TESS</b>	<b>GRADE</b>
2	Strong female with very nice head, good proportions. Very good angulation. Not very good top line. Top line loose in movement. Very good angulation of hind and front.	Excellent
<b>3</b>	<b>KHASANH PSYCHEDELIC FURS</b>	<b>GRADE</b>
1	Female with good proportions of body, good angulation front and hind. Very nice head & long neck. Very good top line. Very good chest, could be a little less tucked up, has very great movement with good reach. That is why will be first.	Excellent

## WEIMARANER (LONGHAIR) CLASS 5A INTERMEDIATE BITCH

---

No.5 Excellent in movement

No.6 Is the best but not mature in movement

<b>4</b>	<b>FELDJAEGER KAPTIVATEDBYTHISMISS</b>	<b>GRADE</b>
	3      Strong bitch, little bit short in body. Nice head with good proportions. Could have longer neck. Good angulation front and hind. Could have better fore-chest. Good top line. During movement elbows a little bit tucked out. In movement efficient and deep.	Excellent
<b>5</b>	<b>AUST CH GRAUSTURM X FACTOR AI</b>	<b>GRADE</b>
	1      Bitch with good proportions of body, compact. Good angulation, good top line and underline. Very nice head. Very nice prominent fore-chest Good in movement. Good coat. <b>(RESERVE LH BITCH CHALLENGE)</b>	Excellent
<b>6</b>	<b>WALDWIESE WORLDS APART</b>	<b>GRADE</b>
	2      Bitch with excellent proportions of the body, very nice angulation of front and hind. Good fore-chest, nice deep chest but could be less tucked up. Very nice head and long neck. Not comfortable in the show ring, needs more training.	Excellent

## WEIMARANER (LONGHAIR) CLASS 10A AUSTRALIAN BRED BITCH

---

Both bitches are very nice. Very close even though totally different types of dogs.

<b>7</b>	<b>CH GREYWEI X EXAMINE AT BROMHUND</b>	<b>GRADE</b>
	1      Very nice bitch with good proportions of the body. A little too massive head but excellent neck. Very good angulation back and fronts. Excellent top line and bottom line. Good prominent fore-chest. Tail set up nicely and carried well. Excellent in movement. <b>(LH BITCH CHALLENGE)</b>	Excellent
<b>8</b>	<b>DUAL CH(T) WALDWIESE NOT NEGOTIABLE TSD</b>	<b>GRADE</b>
	2      Strong bitch Not in show condition, a little bit overweight ,too many kilos. Nice head with good proportions. A little bit short in neck and because of extra kilos on the move her top line is little loose. Excellent bottom line with great fore-chest. Excellent balanced angulation of front and hind. Good condition of coat. Not keen to move,	Excellent
<b>9</b>	<b><del>WEILANDER RETURN FROM THE COLD (LH) (AI)</del></b>	<b>GRADE</b>

**WEIMARANER (LONGHAIR)  
CLASS 11A OPEN BITCH**

---

<b>10</b>	<b>GRAND CH. GREYWEI TIME FOR BUBBLES</b>	<b>GRADE</b>
1	Bitch of good proportions but not in condition for dog show. The weight is a little too big. Because of that in movement the top line is swaying and croup seems running up. Very nice head with good proportions. Nice prominent fore-chest and deep chest. Good angulation front and back. In movement loose elbows. Good coat.	Very Good
<b>11</b>	<b><del>CH WALDWIESE RAIN ON YOUR PARADE</del></b>	<b>GRADE</b>

**WEIMARANER (LONGHAIR)  
CLASS 12A VETERAN BITCH (7 PLUS YEARS)**

---

<b>12</b>	<b>GRAND CH SERIOUSGREY MS UNLOCKING MAGIC</b>	<b>GRADE</b>
1	For her age the bitch is in excellent condition. Middle size, little bit short in body. Excellent top line and bottom line and fore-chest. Very nice female head. Little bit short in neck. Tail is set a little bit too high. Very nice in movement. <b>(VETRN 7+ IN SHOW)</b>	Very Good
<b>13</b>	<b><del>CH GRAUSTURM ELEGANT LADY</del></b>	<b>GRADE</b>



## CRITIQUES - BITCH

Please note critiques have been typed word for word from tape recording with the following word replacements:

MASS with WEIGHT, AMBLE with PACE, ANGULATION OF BACK with HIND ANGULATION or ANGULATION OF HIND

### WEIMARANER CLASS 1A BABY PUPPY BITCH

---

Very close in class but each dog different in type.

<b>14</b>	<b>BROMHUND HELLS BELLS</b>	<b>GRADE</b>
1	Nice proportioned female with excellent head. Excellent proportions with beautiful neck, Excellent top line and bottom line. Very nice angulation front and hind. Tail set up nicely and carried nicely. Beautiful fore-chest, withers well defined.	Very Promising
<b>15</b>	<b>BROMHUND IN TUNE</b>	<b>GRADE</b>
	Bitch with good height. Nice head, long neck. Top line swaying, good bottom line. Nice deep chest, very good angulation of hind legs. Medium angulation of front legs.	Very Promising
<b>16</b>	<b>BROMHUND IVY LEAGUE</b>	<b>GRADE</b>
	Bitch with nice proportion of body. Very nice head, neck could be longer compared to her length. Very good top line and bottom line. Excellent angulation. During movement she is turning out elbows a little bit. Tail nicely set up and carried.	Very Promising
<b>17</b>	<b>BROMHUND JOIN THE DOTS</b>	<b>GRADE</b>
	Smallest of the females. Little bit long compared to height. Very light head and short neck. Top line is reaching up towards the croup. Bottom line is fine. Too long compared to height.	Promising



<b>18</b>	<b>WEIMURASTAR GEORGY GIRL(AI)</b>	<b>GRADE</b>
	2            Very nice bitch with excellent balance of body. Beautiful head. Excellent angulation, excellent top line and bottom line, Beautiful in movement. Arching up during movement.	Very Promising
<b>19</b>	<b>GREYDOVE RED WITCH AT VUKOVI</b>	<b>GRADE</b>
	3            Good proportion of body but she needs more weight. Very nice head and long neck. Beautiful prominent fore-chest, deep chest. Top line a little bit swaying. Good angulations. Tail set up high.	Very Promising
<b>20</b>	<b>BROMHUND KOPY THAT</b>	<b>GRADE</b>
	Bitch with good proportions of body. Very, very nice head and neck. Top line is swayed. Very good angulation of front but could be better in hind. Tails set high and carrier high.	Very Promising
<b>21</b>	<b>BROMHUND KWICK AS A WINK</b>	<b>GRADE</b>
	4            Very nice proportion of the body. Everything is fine. Nice head, nice neck, nice prominent withers and fore-chest. Good top line and bottom line. Good in movement.	Very Promising
<b>22</b>	<del><b>WEIMURASTAR SPARKLES AT ASHBOLT (AI)</b></del>	<b>GRADE</b>

## WEIMARANER CLASS 2A MINOR PUPPY BITCH

---

<b>23</b>	<b>VONDERWEI GREAT EXPECTATIONS</b>	<b>GRADE</b>
	1            Bitch with excellent balance and excellent proportions of the body. Great top line and bottom line. Great fore-chest, excellent angulation. Beautiful head and neck. Being shown excellently and great movement. <b>(MINOR IN SHOW / RESERVE BITCH CHALLENGE / RESERVE BEST OF BREED)</b>	Very Promising
<b>24</b>	<b>WEISACT PARTY AT MOOKIRIVER</b>	<b>GRADE</b>
	2            Bitch with good proportions but needs a little less weight. Good angulation front and back. Good head. During movement toes are carried narrowly, close together. Good top line and bottom line.	Very Promising

<b>25</b>	<b>GHOSTWIND PINK LADIES</b>	GRADE
3	Strong bitch with good proportions. Beautiful head. Could have a little less weight. Nice angulation in the rear, straight arms. She needs more work on her movement and on showing. During movement her elbows are tucked out and she is not harmoniously moving. Back line is not stable during the move.	Promising

### WEIMARANER CLASS 3A PUPPY BITCH

---

<b>26</b>	<b>BROMHUND GAME ON</b>	GRADE
1	Bitch with excellent proportions of body. Very nice head and neck. Excellent top line. The tail is set up nicely. Beautifully deep and spacious chest with nice fore-chest. Very nice smooth movement. <b>(PUPPY IN SHOW)</b>	Very Promising
<b>27</b>	<del><b>LUKEDOM LETS GO GIRLS</b></del>	<del>GRADE</del>
<b>28</b>	<b>WEISNGREY UNLEASHING ANARCHY</b>	GRADE
2	Bitch is little bit high on legs. Very nice head and neck, Straight arm. Chest not spacious. Very narrow front. Arched up top line in standing and in movement. Medium angulation.	Promising

### WEIMARANER CLASS 4A JUNIOR BITCH

---

<b>29</b>	<del><b>WALDWIESE ZINGING IN THE RAIN</b></del>	<del>GRADE</del>
<b>30</b>	<b>AUST CH BROMHUND BEEZ KNEES (AI)</b>	GRADE
4	Bitch with nice proportions and nice head and neck but type is male. Too heavy. Excellent top line and bottom line. Nice in movement. In movement top line is swaying.	Very Good
<b>31</b>	<b>KISMANER DRINKIN WITH DOLLY</b>	GRADE
3	Bitch with good height and good proportion of body. Very nice head. Good angulation, good top line and bottom line. Front is little bit too wide.	Excellent

32	<b>MORAGO SPIRIT OF LAKE IOWA TO POSHVWEI RN</b>	Bitch with nice proportion and nice height. Very nice head and neck and deep chest but too tucked up. Straight forearm. Very nice hind angulation. Very nice in movement.	<b>GRADE</b>  Very Good
33	<b>MORAGO MARVEL OF MARBLE LAKE TO SILABAR</b>	Bitch with nice proportion of body. Nice top line. Chest is not too deep and short. Nice head, Withers nice and prominent. During movement she has the tendency to pace. Straight arms.	<b>GRADE</b>  Very Good
34	<b>FELDJAEGER NOW DARE TO DREAM</b>	1 Just under top height that she can be with excellent proportions of body. Despite the height she is still feminine. Very nice head and neck. Excellent angulation front and back. Very nice deep chest. Excellent top line and tail well set up. During movement soft pasterns. <b>(JUNIOR IN SHOW)</b>	<b>GRADE</b>  Excellent
35	<b>WALDWIESE ZERO LIMITS</b>	2 Bitch with proper height and nice proportions. Good top line and bottom line. Nice head. Neck could be longer. Tail nicely set up and carried nicely. Nice hind angulations. Straight arms. During movement front and back legs wide.	<b>GRADE</b>  Excellent
36	<b><del>GHOSTWIND LILITH IN THE GLEN</del></b>		<b>GRADE</b>
37	<b><del>GHOSTWIND ALL EYES ON THE FOX</del></b>		<b>GRADE</b>

# WEIMARANER

## CLASS 5A INTERMEDIATE BITCH

---

38	<b>AUST CH BROMHUND ABSOLUTELY FABULOUS</b> 2	Strong female but good proportions of body. The head is a little bit strong, nice neck, nice top line and prominent withers. Very good bottom line with deep spacious chest and nice prominent fore-chest. Elbows are tucked in. Nice angulation. During movement she has tendencies to pace. Nice in movement, efficient	GRADE  Excellent
39	<b>CH. SILKWEI JOSEPHINE</b> 1	Med size bitch with very good proportions of body. Beautiful chest, Nicely prominent fore-chest. Beautiful head and neck. Beautiful angulation. In movement she carries her tail high. Nice efficient movement. <b>(RUNNER UP BEST IN SHOW / BITCH CHALLENGE / BEST OF BREED)</b>	GRADE  Excellent
40	<b>VONDERWEI FAMILY AFFAIR</b> 3	Bitch with nice height and excellent proportions. Nice head and neck. Very good top line and bottom line. Very balanced angulation. Tail set up and carried nicely. She is very feminine in expression. Nice in movement.	GRADE  Excellent
41	<b>CH WALDWIESE UP THE ANTE (AI) TDX</b>	Bitch with nice proportions and good height, Very nice head and long neck. Good top line. Tail is set high. Deep chest but ribs not long enough. Very good angulation in hind but straight in front. During movement top line not stable.	GRADE  Excellent
42	<b>CH GHOSTWIND VENI VIDI VINDALOO</b> 4	Bitch with nice head and neck. Good proportions of body. Good top line. Tail is set very high. Chest not very spacious. Very nice angulation of hind but the arm is a little straight.	GRADE  Excellent
43	<del><b>LUKEDOM LIGHTS CAMERA ACTION AI</b></del>		<b>GRADE</b>
44	<del><b>WALDWIESE XHARA FOR SINAWAY (AI)</b></del>		<b>GRADE</b>
45	<b>BROMHUND ZULU ZEST (AI)QND</b>	Nice proportion and height. Nice head and neck. Excellent top line, tail set up and carried nicely. Chest not very spacious. Very nice angulation of hind, short arms. Needs more training for the show ring. Was very hard to judge the movement.	<b>GRADE</b>  Very Good

<b>46</b>	<b>ASHLAREN ECHO IN THE FIELD</b>	<b>GRADE</b>
	Bitch with good height and good proportions of the body. Nice head. Could have little longer neck. Good chest. Very nice angulation of hind, straight front. Nice smooth movement.	Excellent

**WEIMARANER  
CLASS 10A AUSTRALIAN BRED BITCH**

---

<b>47</b>	<b>CH ASHLAREN NINA THE BALLERINA</b>	<b>GRADE</b>
	Strong female with good proportion. The head seems a little bit male. Good length of neck. Excellent top line with prominent withers. Excellent bottom line, excellent angulation. The tail is set up nicely and she is good in movement.	Excellent

<b>48</b>	<b>AUST CH BROMHUND BELLS N WHISTLES</b>	<b>GRADE</b>
	Medium size bitch but heavy. Top line is not very good. Top line is swaying. Tail set up and carried nicely. Nice head, good neck, good bottom line and nice chest. Movement she is efficient but she is carrying the legs widely, very wide.	Very Good

<b>49</b>	<b>CH. HINDIN WISH UPON A STAR</b>	<b>GRADE</b>
2	Bitch with nice height and good proportions. Nice head and neck. Good top line. Very nice deep chest. Angulation at front and back is balanced and harmonic. During movement elbows are very loose.	Excellent

<b>50</b>	<b>AUS CH BROMHUND MAKIN MAGIC</b>	<b>GRADE</b>
3	Medium size bitch. She is a little bit too long. Very nice noble head, beautiful neck, top line with nicely prominent withers. Very nice chest, excellent angulation in the hind, the arm is a bit short. Very good in movement.	Excellent

<b>51</b>	<b>CH WALDWIESE POINT OF NO RETURN (AI)</b>	<b>GRADE</b>
4	Bitch with nice body, Good proportions and height. She is very feminine. Good top line with nicely set up tail and tail carried nicely. Good angulation. Chest deep enough. Nice in movement.	Excellent

52	<b>GHOSTWIND VENI VIDI AMAVI(AI)</b>	<p>Bitch with nice proportions and good height, Good head and neck. Top line is swaying. Perfect bottom line and nice deep chest. Nice angulation. She is moving efficiently and nice but during movement the top line is loose.</p>	<p><b>GRADE</b></p> <p>Very Good</p>
53	<b>CH. LUKEDOM BREAK OUT THE BOLLI</b>		<b>GRADE</b>
54	<b>CH WEIMURASTAR HARROW ON THE HILL</b>	<p>Medium size but very strong with very strong bone. She is not proportional to the height. Nice head. Little bit short in neck. Good top line. Nicely set up tail and carried nicely. The chest is too big and the fore-chest is developed too much. In expression she is very heavy. Tendency to pace and carries back legs very widely.</p>	<p><b>GRADE</b></p> <p>Good</p>
55	<b>CH. GRISWOLD VIENNA WALTZ (AI)</b>	<p>1 This bitch is in the top height that she can be, The head is proportional to height but female. Good neck and top line. Very deep chest and very strong fore-chest. Excellent angulation. Tail set up and carried nicely. The movement was OK without anything wrong.</p>	<p><b>GRADE</b></p> <p>Excellent</p>

## WEIMARANER CLASS 11A OPEN BITCH

---

Open class close

56	<b>AUST CH BROMHUND IDYLLIC IZZY</b>	<p>Bitch with good height. A little bit short. Very nice head and long neck. Good top line. Good depth of chest. Balanced angulation. Tail set and carried nicely. Movement is efficient but front is carried widely.</p>	<p><b>GRADE</b></p> <p>Excellent</p>
----	--------------------------------------	---	--------------------------------------

57	<b>CH GHOSTWIND FULL DISCLOSURE AT ARNHILL (AI)</b>		<b>GRADE</b>
		Bitch with proper height and good proportion of the body. Nice head and neck is a little short. Top line is swaying. Proper bottom line. Nice deep chest with good fore-chest. The tails is carried nicely and set nicely. During movement the elbows are a little loose. Good angulation.	Excellent
58	<b>CH.GRISWOLD XTRA APPLAUS</b>		<b>GRADE</b>
	1	Big female and a little bit heavy in head. Very nice neck. Good top line. Spacious chest with long ribs. Very nice angulation. Good in movement. Tail is a little bit folded on the end. <b>(OPEN IN SHOW)</b>	Excellent
59	<b><del>CH. WINOKA FOLLYHILL UP IN LIGHTS (IMP-CAN)</del></b>		<b>GRADE</b>
60	<b>CH BROMHUND SECRET SCANDAL</b>		<b>GRADE</b>
	2	Very balanced and harmonically built female. Very good proportions. Head very good expression. Good top line and bottom line. Very nice angulation of hind. Deep and long chest. Good angulation front and back. Is very nice in movement.	Excellent
61	<b>GRAND CH GHOSTWIND ANGEL EYES</b>		<b>GRADE</b>
	3	Bitch with good proportion of body. Very good head and neck, Good top line and bottom line. Excellent angulation in hind. Front is a little bit straight. Tail is set up very high. She is nice in movement.	Excellent
62	<b>CH ASHLAREN KAHLUA MARTINI</b>		<b>GRADE</b>
	4	Bitch proportional in height with nice proportional body. Good head. Neck a little short. She is too massive for female. Good top line with nice chest and long ribs. Nice angulation in hind, little straight in front. Fine in movement,	Excellent
63	<b>CH WALDWIESE LET TH FORCE B WITHU</b>		<b>GRADE</b>
		Bitch seems a little short legged compared to proportions required by standard. Good head with strong neck. Little loose in elbows in movement. Good top line. Good depth of chest but fore-chest a bit too big.	Very Good

64 ~~DUAL CH (T) GRAUSTURM MY ELEGANT DESIGN~~ ~~CCD~~ **GRADE**

65 **GHOSTWIND THE BITCH IS BACK** **GRADE**

Strong female with good height and good proportions of body, Top line is swaying, bottom line is nice and long deep chest. Good angulation front and back. Nice in movement.

Excellent

## **WEIMARANER CLASS 12A VETERAN BITCH (7+ YEARS)**

---

All bitches in very good condition taking into account their age.

66 **CH. GRAUHUND ROCK YOUR SOCKS** **GRADE**

3 Good height, excellent proportions. Very nice head, very nice angulation. Excellent top line and bottom line. Fine in movement.

Excellent

67 **CH. GRISWOLD TIME KEEPER (AI)** **GRADE**

1 Big bitch with little bit male expression. Excellent top line and bottom line. Strong head but in proportion to body, Nice neck, very nice chest, deep and long. Very nice angulation. Tail is set and carried nicely. Everything fine in movement. Very nice but can see age in movement. Overall very nice dog.

Excellent

68 **CH. WALDWIESE JAMAICAN ME CRAZY(AI)** **GRADE**

4 A little bit short, good height. Arching top line. Very good hind angulation, front a bit straight. Deep chest. Good in movement,

Very Good

69 **GR CH BESKO COLLS MANY SPIRITS (AI)** **GRADE**

2 Very good proportions. Excellent top line and bottom line. Very nice head and neck. Nice in movement. Did not see the age of the dog in the movement. Very nice angles back and front.

Excellent

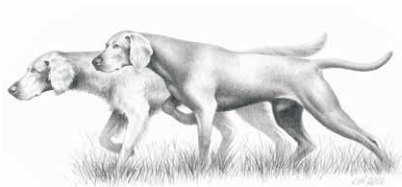


**WEIMARANER  
CLASS 18A NEUTER BITCH**

---

<b>70</b>	<b>GRAND. CH. NEUT. CH. GHOSTWIND LOUISE VUITTON (AI) SWN. RN. TDX.</b>	<b>GRADE</b>
2	Good length and good proportions, Nice feminine head with long neck. Excellent top line and nicely marked withers. Tail nicely set and carried nicely. Deep spacious chest. Perfect angulation in hind but front is steep and elbows tucked out. <b>(RESERVE NEUTER BITCH CHALLENGE)</b>	Excellent
<b>71</b>	<b>DUAL CH. (T) GREYHOST GRACE KELLY RN TDX</b>	<b>GRADE</b>
	Good height but little bit short in body. Chest reaches elbow but short. Because of that she is very tucked up. Very nice feminine head with excellent expression. Nice neck. Good top line. Sufficient angulation front and back,	Very Good
<b>72</b>	<b>CH. NEUT. CH. HUNTRSDALE UNIQUE DANCER C.C.D RE</b>	<b>GRADE</b>
4	Bitch is good height but heavy expression. Body too long in proportion to height. Good head and neck. Good top line. Very nice chest, nice fore-chest. Nice angulation in hind, front a little steep. In movement front legs are carried too narrow. Tail is set high,	Excellent
<b>73</b>	<b>BROMHUND TEMPEST RAIN</b>	<b>GRADE</b>
1	Big female but female expression. Very nice proportions of the body, excellent angulation. Beautiful head with excellent expression. Excellent chest with very nice fore-chest. Tail is set nicely and carried nicely. Good movement. <b>(NEUTER BITCH CHALLENGE / RESERVE NEUTER BEST OF BREED)</b>	Excellent

<b>74</b>	<b>SUPREME CH FELDJAEGER IM LIVING THE DREAM</b>	<b>GRADE</b>
	3      Good height but little bit too short, Bite is on the side of being a level bite. Nice head, neck is a little bit short. Good top line. Very nice chest. Excellent angulation in hind. Steep front	Excellent
<b>75</b>	<b>CH. GRISWOLD TIME TO FLY(AI)</b>	<b>GRADE</b>
	Good height she is not in dog show condition. She has too much weight, Due to the weight the bitch seems heavy. In expression she seems male. Strong head, strong neck and little too short. Good top line, deep chest with nice prominent fore-chest, Sufficient angulation. In movement the front legs were too wide and the elbows tucked out,	Very Good
<b>76</b>	<b>CH / NEUTER CH WALDWIESE LOCKED OUT OF HEAVEN</b>	<b>GRADE</b>
	In movement elbows tucked out. Bitch of good height, seems a little bit short legged. Heavy in compared to height. Nice head, good neck, Good top line and bottom line. Tail set up nicely and carried nicely. Good angulation front and hind.	Very Good



## CRITIQUES - LONGHAIR DOG

Please note critiques have been typed word for word from tape recording with the following word replacements:

MASS with WEIGHT, AMBLE with PACE, ANGULATION OF BACK with HIND ANGULATION or ANGULATION OF HIND

### WEIMARANER (LONGHAIR) CLASS 1 BABY PUPPY DOG

---

77	WALDWIESE DEFINITELY NO DOUBTS (AI)	GRADE
1	A little star. He is very pretty. Great proportions, beautiful body, excellent top line and bottom line. Beautiful head, excellent expression, excellent character. Balanced angulation. Moving very beautifully.	Very Promising

### WEIMARANER (LONGHAIR) CLASS 4 JUNIOR DOG

---

78	<b>CH FELDJAEGER OUTRAGEOUS FOREVER (LH)</b>	<b>GRADE</b>
2	Dog with good height and good proportions. Very nice head, nice long neck. Tail is set nicely and carried nicely. Excellent top line and bottom line. Very nice angulation and spacious chest. Excellent coat, excellent quality of coat. During movement elbows a little bit loose. Efficient and smooth movement.	Excellent
79	<b>AUST CH BROMHUND FAIR GAME (AI)</b>	<b>GRADE</b>
1	Very pretty dog with strong bones and nice male head. Good neck. Nice top line with prominent withers. Deep spacious chest with nicely prominent fore-chest. Very nice angulation. Good quality coat. Nice movement. <b>(RESERVE LH DOG CHALLENGE / RESERVE LH BEST OF BREED)</b>	Excellent

<b>80</b>	<b>BROMHUND ETHEREAL</b>	<b>GRADE</b>
	3 Dog of good height and proportions. Nice head, neck could be a bit longer. Good top line. Chest could be more spacious and longer. He is a little bit too tucked up. Good angulation, good quality coat. Good movement.	Excellent

**WEIMARANER (LONGHAIR)  
CLASS 5 INTERMEDIATE DOG**

---

<b>81</b>	<b>AUST CH CZE JR CH. POL JR CH. SVK CH ECCO CRAZY FOREVER SJ (LH) (IMP CZE)</b>	<b>GRADE</b>
	1 Dog of good height but a little bit short. Strong bones. Massive. Nice head with good expression. The neck could be a bit longer. Top line after the withers is swayed. Nice deep chest with nice prominent fore-chest. Excellent angulation in hind but front a little steep.	Very Good

<b>82</b>	<b><del>SYRINX JOKERS WILD</del></b>	<b>GRADE</b>
-----------	--------------------------------------	--------------

**WEIMARANER (LONGHAIR)  
CLASS 10 AUSTRALIAN BRED DOG**

---

<b>83</b>	<b>AUST. GRAND CH. WALDWIESE SAME BUT DIFFERENT</b>	<b>GRADE</b>
	1 Tail is set up really high. Good proportions, good top line and bottom line. Nice chest with nicely prominent fore-chest. Excellent angulation. Nice head. Excellent movement. <b>(BEST IN SHOW / LH BEST OF BREED / LH DOG CHALLENGE)</b>	Excellent

**WEIMARANER (LONGHAIR)  
CLASS 11 OPEN DOG**

---

84	<b>AUST CH BROMHUND PERI</b>	<b>GRADE</b>
1	Dog with good height but a little short in body. Nice head, neck could be a bit longer. Good top line. Sufficient angulation. Spacious deep chest. Good coat. Good movement. Tail set up a little too low.	Very Good

**WEIMARANER (LONGHAIR)  
CLASS 18 NEUTER DOG**

---

85	<b>GRAUSTURM PLAY IT COOL CDX SWA QND ORA</b>	<b>GRADE</b>
1	Dog with very good size and good proportions. Very nice head with excellent expression. Beautiful neck, excellent top line and bottom line. Very nice angulation of hind, front a little bit steep. Coat is in excellent condition. In movement tendency to pace. Besides that nice movement. <b>(LH BEST OF BREED NEUTER)</b>	Excellent



## CRITIQUES - DOG

Please note critiques have been typed word for word from tape recording with the following word replacements:

MASS with WEIGHT, AMBLE with PACE, ANGULATION OF BACK with HIND ANGULATION or ANGULATION OF HIND

### WEIMARANER CLASS 1 BABY PUPPY DOG

---

<b>86</b>	<b>BROMHUND HEROS BLADE</b>	<b>GRADE</b>
1	Dog with good height and good proportions. Very nice head, nice neck, good top line and bottom line. Nice deep chest. Excellent hind angulation, arm is a little short.	Very Promising
<b>87</b>	<b>BROMHUND IN A BUZZ</b>	<b>GRADE</b>
3	Dog with strong bones. Very nice male head. He has a long body and that's why the back line is swayed. Maybe later on it will correct itself. Perfect angulation front and hind. At the moment his body is too long. Nice movement.	Very Promising
<b>88</b>	<del><b>MARANERGOLD EMPIREROSE</b></del>	<b>GRADE</b>
<b>89</b>	<b>WALDWIESE DO YOU KNOW WHO I AM (AI)</b>	<b>GRADE</b>
2	Youngest of the class. Good bone. Very good proportions of the body. Excellent angulation, excellent top line and bottom line with excellent expression. Pretty movement.	Very Promising

## WEIMARANER CLASS 3 PUPPY DOG

---

<b>90</b>	<b>WEISACT PICK YOUR POISON</b>	<b>GRADE</b>
1	Very nice dog with excellent proportions of the body. Beautiful neck and head. Excellent top line and bottom line. Excellent angulation. Very nice fore-chest. During movement the elbows are very tucked out. Very nice long drive.	Very Promising

## WEIMARANER CLASS 4 JUNIOR DOG

---

<b>91</b>	<b>CH. HINDIN XTRA XTRA (AI)</b>	<b>GRADE</b>
1	Strong dog on the high bar of the height he can be. Very nice male head. A bit of a long neck. Excellent top line, excellent deep chest with a nicely prominent fore-chest. Nice angulation. Smooth movement.	Excellent

<b>92</b>	<del><b>LUKEDOM YIPPEE KIYAY AT AMARIGE (AI)</b></del>	<b>GRADE</b>
-----------	--	--------------

<b>93</b>	<b>GHOSTWIND ARCHIE IS BACK</b>	<b>GRADE</b>
2	Medium size dog with a little bit of a feminine expression. The head is a little bit light. Nice neck, good top line, pretty good chest. Nice angulation in the hind but the front is a little bit steep. Good movement.	Excellent

## WEIMARANER CLASS 5 INTERMEDIATE DOG

---

<b>94</b>	<b>CH GHOSTWIND VENI VIDI VICI (AI) JC</b>	<b>GRADE</b>
1	Medium size dog with very nice proportions of the body. The loins are a little bit loose. Very nice head and neck. The withers are nicely prominent. Deep chest with nice fore-chest. Good angulation. The tail is set up high and carried highly. Nice movement with long drive.	Excellent

<b>95</b>	<b><del>AUST CH BROMHUND ANCHORMAN</del></b>	<b>GRADE</b>
<b>96</b>	<b>BROMHUND ZORROS MARK (AI)</b> 2 Good size dog with nice proportions of the body. Very nice head and neck. Excellent top line with nicely set tail. Deep chest with long ribs. Good angulation and moving with long drive. Nice muscular dog.	<b>GRADE</b>  Excellent
<b>97</b>	<b>AUST CH KHASANH UTTER KAOS</b> 3 Good size dog with nice proportions. Very nice male head. Good neck. Very nice top line with nicely prominent withers. Angulation could be better. Deep chest. Sufficiently prominent fore-chest. Excellent in movement. Very nice muscular dog.	<b>GRADE</b>  Excellent
<b>98</b>	<b>WEIMARGRAU BALANCE IN MOTION</b> Big dog with pretty low weight taking into account its size. Beautiful male head with nice long neck. Top line after withers is sway with prominent loins. Deep chest but a little bit narrow. Good angulation of hind with steep front. Excellent muscles on the body. During movement elbows are tucked out and front is carried narrowly. Nice movement but needs more training for the dog show.	<b>GRADE</b>  Very Good
<b>99</b>	<b>CH. LUKEDOM KISS MY ACE</b> Dog has delicate bone with female expression. Nice head in proportion to its size. Nice long neck. Deep chest but very short. Very tucked up. Sufficient angulation. During movement pretty short drive.	<b>GRADE</b>  Good
<b>100</b>	<b>CH. WALDWIESE XPLAIN YOURSELF TD (AI)</b> Good size dog with good proportions. Nice male head but a little bit heavy compared to his size, Pretty deep chest but narrow. Good angulation in hind but steep in front. Pretty good in movement,	<b>GRADE</b>  Very Good
<b>101</b>	<b><del>CH GHOSTWIND LUCIFER TH STAR DANCER</del></b>	<b>GRADE</b>



## WEIMARANER CLASS 10 AUSTRALIAN BRED DOG

---

Dogs in this class are very nice. Very pretty dogs.

<b>102</b>	<b>CH. VONDERWEI DARE TO DREAM (AI)</b>	<b>GRADE</b>
1	Medium size dog with good proportions of the body. Beautiful male head with a long neck. Very nice deep chest with excellent prominent fore-chest. Very nice angulation. The tail is set up nicely and carried nicely. Very nice muscled dog with excellent movement. Nice deep drive. Being shown excellently. <b>(CHALLENGE DOG)</b>	Excellent
<b>103</b>	<b>CH. BROMHUND LIMITLESS</b>	<b>GRADE</b>
3	Good size dog with very nice proportions of the body. Head in proportion to size. The loins are a little bit too long and swayed and due to that during movement topline is not stable. Nice deep chest and prominent fore-chest. Good angulation. Very nice muscular dog . In movement front is carried very wide.	Excellent
<b>104</b>	<del><b>CH. VUKOVI AND LET THE CHAOS BEGIN</b></del>	<del><b>GRADE</b></del>
<b>105</b>	<del><b>ASHLAREN GOOD TIME CHARLIE</b></del>	<del><b>GRADE</b></del>
<b>106</b>	<b>CH WALDWIESE QUITE FRANKLY</b>	<b>GRADE</b>
	Medium size dog with excellent proportions. Very nice head and neck. Nice muscular dog. Nice movement. Deep chest. Smooth in movement with deep drive. Chest could be a bit longer.	Excellent
<b>107</b>	<b>CH ASHBOLT HIGH CLASS (AI) TD JC</b>	<b>GRADE</b>
2	Medium size dog with good proportion of the body. Nice head and long neck, Excellent top line and bottom line. Chest prominent in an excellent way. Nice angulation. Nice muscular dog.	Excellent
<b>108</b>	<b>AROHALODGE BETTORS DELIGHT</b>	<b>GRADE</b>
	Dog on top height that he can be. Weight is low compared to size. Elbows are tucked out. Pretty good angulation of hind, steep front. Deep chest but little bit narrow and short, Movement pretty short step.	Very Good

**WEIMARANER  
CLASS 11 OPEN DOG**

---

<b>109</b>	<b>AUST CH BROMHUND WHAT A BUZZ</b>	<b>GRADE</b>
2	Dog with great height and proportion with nice head and neck. Excellent top line with nicely prominent withers. Beautiful chest with strong fore chest. Excellent angulation. Beautifully muscular dog with nice movement.	Excellent
<b>110</b>	<b>AUST CH BROMHUND EXCLUSIVE IMAGE (AI)</b>	<b>GRADE</b>
	Medium size dog. Head is too heavy compared to the weight. Weight is too low. Top line is reaching down after the withers and reaching up towards the croup. Very short arm. Long chest but not very spacious. The dog has too strong bone compared to its size. Sufficient angulation. In movement has loose elbows.	Good
<b>111</b>	<b>AUST. SUPREME CH. ARNHILL STANDING ROOM ONLY (AI)</b>	<b>GRADE</b>
1	Good size male with excellent proportions. Nice male head, nice neck. Excellent top line and bottom line. Excellent angulation. Tail is set up nicely and carried nicely. Chest could be deeper. Nice muscular dog. Very nice long drive, Presentation of dog is excellent. <b>(RESERVE DOG CHALLENGE)</b>	Excellent
<b>112</b>	<b>SUP CH ASHLAREN BRING OUT THE BUNDY</b>	<b>GRADE</b>
	Medium size dog with good proportion of body and nice angulation. A little bit feminine in expression. Top line is a little bit sloping in loin region. Excellent angulation in hind and good in front, Chest could be deeper and longer. Light head little bit feminine. Very nice neck. During movement top line is a little unstable. Long drive and smooth movement.	Very Good

<b>113</b>	<b>WALDWIESE UNDER THE RADAR (AI)</b>	<b>GRADE</b>
	3 Medium size dog with good proportions. Deep chest but not very long. Dog seems a little bit short. Noce head, a little bit feminine. Nice long neck, excellent top line. During movement front is carried a little widely but nice movement overall.	Excellent
<b>114</b>	<b>ARGENTAL LEADER OF MEN</b>	<b>GRADE</b>
	Dog with good height and good proportions. Nice male head but too heavy compared to the height of the dog. In front standing very narrow compared to the deep chest. Very deep chest with very developed fore-chest. Top line a little sway. Bottom line is nice. Good angulation front and back. Seems a little bit long compared to height. Nice muscular dog. Nice movement.	Very Good
<b>115</b>	<b>GRAND CH WALDWIESE PLEASE BE SIRIUS (AI)</b>	<b>GRADE</b>
	4 Medium size dog. Little bit feminine but nice strong head. Deep chest but a little bit short. He is tucked up. Excellent angulation of hind. Front a little steep Could be a little bit longer and a little bit stronger. Movement is OK.	Excellent

**WEIMARANER  
CLASS 12 VETERAN DOG (7+ YEARS)**

---

446	<del><b>SUP. CH. BROMHUND BULLETPROOF ET</b></del>	<b>GRADE</b>
117	<b>AUST CH BROMHUND YOURE SO VAIN</b>	<b>GRADE</b>
	1 Dog as high as can be. Good proportions. Excellent head and neck. Excellent angulation. Tail set up excellently and carried excellently. Beautiful long chest. Muscular dog for his age in excellent condition. Beautiful dog.	Excellent
<b>118</b>	<b>SUP CH WALDWIEZE GAME KEEPA AT POSHVWEI (IMP NZ) ET RE QND ORA NRD CDX</b>	<b>GRADE</b>
	2 Medium size dog. Little bit short. Weight is low and a little bit feminine in expression. Deep spacious chest. Good angulation in the hind and a little bit steeper in front. You can see the age in the movement.	Very Good

**WEIMARANER  
CLASS 18 NEUTER DOG**

---

<b>119</b>	<b>TRI CH (T)(TS) NEUT. CH GHOSTWIND OSKAR DELA RENTA (AI) ET</b>	<b>GRADE</b>
1	Dog on top of the height according to the standard. Strong muscular dog with excellent proportions. Beautiful male head, long neck. Excellent top line and bottom line. Deep spacious chest. Very nice angulation. Could be shown better. A little heavy in movement not caused by the dog but caused by the handler. <b>(BEST NEUTER IN SHOW / NEUTER BEST OF BREED)</b>	Excellent
<b>120</b>	<b>AUST NEUT CH GREYWEI JUMPIN JACK FLASH</b>	<b>GRADE</b>
2	Good size dog with good proportions. A bit light for a dog. Excellent top line and bottom line. Chest could be deeper and fore-chest more prominent. Good angulation of hind. Front a little bit steep, Fine movement. <b>(RESERVE NEUTER CHALLENGE DOG)</b>	Excellent
<b>121</b>	<b>NEUT. CH. ASHLAREN LORD GUNTER TD</b>	<b>GRADE</b>
3	Good size dog but in expression very feminine. Chest is not deep enough or spacious enough. Nice feminine head. Neck a little short. Very nice angulation of the hind. Steep in front. Good top line. Tail is set on and carried nicely. Nice light movement but in expression feminine.	Very Good

Expert Pet Nutrition™

# ADVANCE™

Join the ADVANCE™ Pro Team to enjoy exclusive member benefits & discounted prices.



Free delivery for orders over \$95



Exclusive discounted prices across ADVANCE™ products for our breeder community.



Free puppy kits for litters



Scan the QR code to sign up

